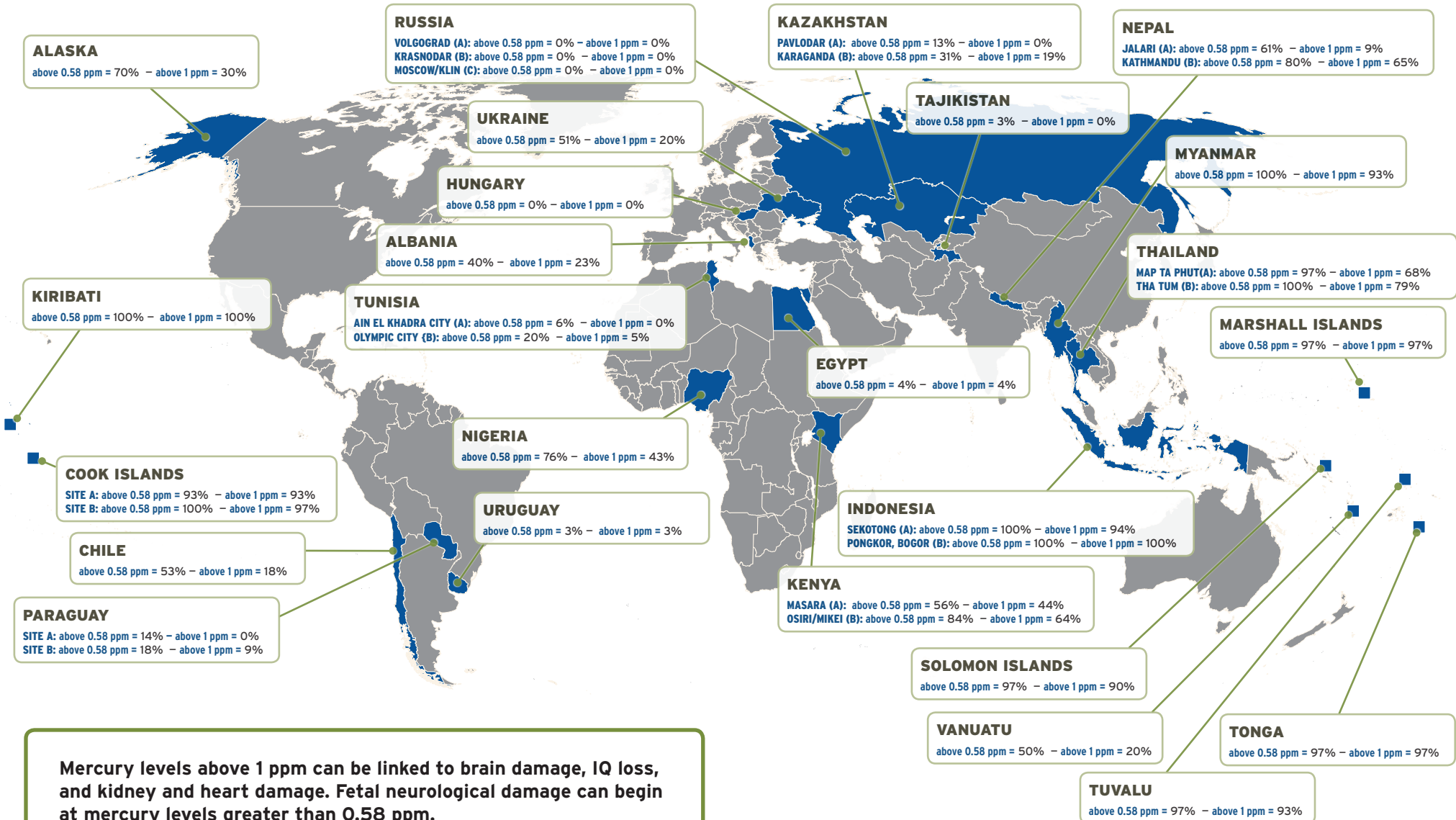


# MERCURY IN WOMEN OF CHILD-BEARING AGE RESULTS FROM COMMUNITIES ACROSS THE GLOBE



Mercury levels above 1 ppm can be linked to brain damage, IQ loss, and kidney and heart damage. Fetal neurological damage can begin at mercury levels greater than 0.58 ppm.

(US EPA reference dose for mercury in human hair is equivalent to 1ppm.)